



ECONOMIC INDICATORS

NEW SOUTH WALES

EMBARGO: 11:30AM (CANBERRA TIME) MON 14 DEC 1998

C O N T E N T S

	<i>page</i>
Notes	2
NSW Overview	3
Main features	4
List of tables and graphs	5
Population	6
Labour	7
Production	10
Building	11
Retail trade	12
New motor vehicle registrations	13
Tourism	14
Consumer and producer price indexes	15
Finance	16
State Government finance	17
Investment	18
International trade	19

- For more information about these and related statistics, contact Bill Markham on (02) 9268 4376 or e-mail bill.markham@abs.gov.au or refer to the back cover of this publication.

NOTES

GENERAL This publication provides information on a wide range of economic indicators which are the latest available at the time of publication. In a number of cases, figures appearing in this summary are preliminary and are subject to revision in subsequent issues.

CHANGES IN THIS ISSUE Please note that for table 22 comparative figures for 1997-98 are not available due to changes in coverage of data from General Government Budget to all General Government by the New South Wales Treasury.

SEASONAL ADJUSTMENT AND TREND ESTIMATION Seasonal adjustment is a means of removing the estimated effects of normal seasonal variation from a series so that the effects of other variations on that series can be more clearly recognised. Seasonal adjustment does not aim to remove the irregular or non-seasonal influences which may be present. This means that movements of seasonally adjusted estimates may not be reliable indicators of trend behaviour. Smoothing seasonally adjusted series produces a measure of the underlying trend by reducing the impact of the irregular component of the series. This smoothing technique does result in revisions to the most recent estimates as additional observations become available. For an explanation of seasonal adjustment derivation, refer to the publication *Seasonally Adjusted Indicators* (Cat. no. 1308.0).

STANDARD ERRORS OF ESTIMATES One measure of the variability which occurs as a result of surveying only samples of the total business population is the standard error. There are about two chances in three that a survey estimate is within one standard error of the figure that would have been obtained if all businesses had been included, and about 19 chances in 20 that it is within two standard errors. The standard error can also be expressed as a percentage of the estimate and this is known as the relative standard error (RSE). For detailed explanatory notes and definitions for the items shown in this publication, readers are referred to the specific ABS publications.

Current publications produced by the ABS are listed in the *Catalogue of Publications* (Cat. no. 1101.0). A *Release Advice* (Cat. no. 1105.0) is issued on Tuesdays and Fridays which lists publications to be released in the next few days. These publications are available from any ABS office.

.....

SYMBOLS AND OTHER USAGES	kWh	kilowatt hour
	teraJ	terajoule
	n.a.	not available
	n.p.	not available for publication but included in totals where applicable
	n.y.a	not yet available
	r	figure or series revised since previous issue
	..	not applicable
	—	nil or rounded to zero
	—	break in continuity of series (where a line is drawn across a column between two consecutive figures)

Gregory W. Bray
Regional Director
New South Wales

.....

NSW OVERVIEW

EMPLOYMENT

Employment remained fairly steady in NSW in October 1998 with a total of 2,899,700 people being employed in seasonally adjusted terms. National employment rose by 35,000 during the month.

UNEMPLOYMENT

Unemployment in NSW fell by 9.0% in October 1998 to a seasonally adjusted figure of 208,700. The NSW unemployment rate fell from 7.3% in September 1998 to 6.7% in October while the national rate fell from 8.1% to 7.7% over this period.

AVERAGE WEEKLY EARNINGS

Full-time adult ordinary time earnings in NSW rose by 1.8% in the August quarter 1998 to \$760.90 per week in seasonally adjusted terms. National earnings also rose by 1.8% over this period. Over the past year, full-time adult ordinary time earnings have risen by 4.0% in NSW and by 4.2% nationally.

BUILDING APPROVALS

The seasonally adjusted number of new dwelling units approved for NSW in September 1998 increased slightly (0.6%) from the previous month to 3,800.

RETAIL

In seasonally adjusted terms, total retail sales for NSW in September 1998 was \$4,019.1 million. The figure for August 1998 was \$3,931.4 million.

NEW MOTOR VEHICLE REGISTRATIONS

New motor vehicle registrations for NSW in seasonally adjusted terms in September 1998 rose by 9.6% from the previous month to 23,597.

FINANCE

The seasonally adjusted value of housing finance commitments for owner occupation in NSW in September 1998 was \$1,759 million. This represented a 3.6% decrease on the previous month and a decrease of 5.2% since September 1997.

MAIN FEATURES

NEW MOTOR VEHICLE REGISTRATIONS

In seasonally adjusted terms, the number of new motor vehicle registrations for NSW in September 1998 was 7.1% lower than the record figure in July 1998 (25,391). However the September 1998 figure was 9.6% higher than the previous month and 11.5% up on the figure a year ago.

The number of new passenger vehicle registrations in September 1998 was 20,383, an increase of 11.7% on the previous month and up 10.5% on September 1997. The figure for new registrations of other vehicles (excluding motor cycles) was 3,213, down 2.0% on August 1998 but 18.5% higher than in September 1997.

National new motor vehicle registrations was 66,519, representing increases of 2.6% and 6.1% respectively over the same periods. However, the national figure was still 7.3% lower than the record figure in June 1998 (71,752). The national trend fell in September 1998 by 0.7%, following a slight drop in the previous month. Previously, the trend had been increasing since January 1998.

TOURISM

In NSW, room occupancy rates for licensed hotels, motels and guest houses and serviced apartments with 15 or more rooms or units, decreased by 5.9% in the June quarter 1998 compared with the March quarter 1998 and decreased by 2.1% compared with the June quarter 1997. At the national level, the room occupancy rate fell by 5.9% from the March quarter 1998 and by 2.0% compared with the June quarter 1997.

In the Sydney Tourism Region, the room occupancy rate fell from 70.5% for the June quarter 1997 to 66.3% for the June quarter 1998. The occupancy rate falls reflected increases in accommodation supply exceeding demand increases.

The number of licensed hotels, motels and guest houses and serviced apartments in NSW increased by 2.7% from 1,232 in the June quarter 1997 to 1,265 in the June quarter 1998.

For the Sydney Tourism Region, the number of establishments increased by 10.0% from 230 in the June quarter 1997 to 253 in the June quarter 1998 and capacity, in terms of guest rooms, also increased by 10.0%.

In NSW for the June quarter 1998, rooms and units available in licensed hotels, motels and guest houses and serviced apartments increased by 5.1% from the capacity for the June quarter 1997. Capacity in serviced apartments increased by 9.8% for the same period. This accommodation type has been identified separately for the first time in the survey in 1998 but data for 1997 have been recompiled to provide comparisons.

Takings from accommodation for licensed hotels, motels and guest houses and serviced apartments in NSW for the June quarter 1998 fell by 7.7% from the March quarter 1998, while there was a 4.4% increase from the June quarter 1997.

Average takings from accommodation per room night for hotels in NSW for the June quarter 1998 was \$146, the same as the June quarter 1997. For motels there was an increase from \$76 to \$78 and for serviced apartments from \$119 to \$129.

LIST OF TABLES AND GRAPHS

Page

POPULATION

- 1** Estimated resident population, NSW 6

LABOUR

- 2** Labour data, latest time period, NSW and Australia 7
3 Labour data, time series, NSW 7
4 Labour force status of the civilian population, NSW 8
5 Graph: Unemployment rates, NSW and Australia 9

PRODUCTION

- 6** Coal, electricity and gas production, latest time period, NSW and Australia . . 10
7 Coal, electricity and gas production, time series, NSW 10

BUILDING

- 8** Building approvals, latest time period, NSW and Australia 11
9 Building approvals, time series, NSW 11

RETAIL TRADE

- 10** Turnover of retail establishments, latest time period, NSW and Australia . . . 12
11 Turnover of retail establishments, time series, NSW 12

NEW MOTOR VEHICLE REGISTRATIONS

- 12** New motor vehicle registrations, latest time period, NSW and Australia 13
13 New motor vehicle registrations, time series, NSW 13

TOURISM

- 14** Accommodation Establishments, latest time period, NSW and Australia. 14
15 Accommodation Establishments, time series, Sydney and NSW. 14
16 Graph: Hotels, motels etc., monthly room occupancy rates,
 Sydney Tourism Region and NSW. 14

CONSUMER AND PRODUCER PRICE INDEXES

- 17** Consumer and producer price indexes, latest time period,
 NSW and Australia 15
18 Consumer and producer price indexes, time series, NSW 15
19 Graph: Consumer Price Index, Sydney and average of 8 capital cities 15

HOUSING FINANCE

- 20** Finance commitments, latest time period, NSW and Australia 16
21 Finance commitments, time series, NSW 16

STATE GOVERNMENT FINANCE

- 22** Government finance, general government sector, time series, NSW. 17

INVESTMENT

- 23** Actual private new fixed capital expenditure, latest time period,
 NSW and Australia 18
24 Actual private new fixed capital expenditure, time series, NSW. 18
25 Graph: Actual private new fixed capital expenditure, NSW. 18

INTERNATIONAL TRADE

- 26** Imports and exports, latest time period, NSW and Australia 19
27 Imports and exports, time series, NSW 19

1

ESTIMATED RESIDENT POPULATION, NSW

Period	Estimated resident population at end of period			Increase during period			Mean estimated resident population for year ended	
	Males	Females	Persons	Natural increase(a)	Net estimated migration	Total increase(b)	30 June	31 December
	'000	'000	'000	'000	'000	'000	'000	'000
1995	3 064.0	3 104.8	6 168.8	42.0	33.7	78.6	6 093.2	6 128.0
1996	3 098.2	3 142.6	6 240.9	40.6	29.3	72.1	6 167.2	6 204.2
1997	3 131.5	3 174.8	6 306.3	11.9	1.4	13.3	6 240.9	6 276.1
1996								
December qtr	3 098.2	3 142.6	6 240.9	11.1	8.4	19.5
1997								
March qtr	3 108.6	3 152.6	6 261.3	11.4	9.0	20.4
June qtr	3 115.3	3 159.0	6 274.4	11.0	2.1	13.1
September qtr	3 124.9	3 168.1	6 293.0	7.6	11.0	18.6
December qtr	3 131.5	3 174.8	6 306.3	11.9	1.4	13.3
1998								
March qtr	3 144.0	3 185.8	6 329.8	9.9	13.5	23.4

^a Excess of live births over deaths.

^b For dates prior to June 1996, differences between the total increase shown and the sum of the natural increase and net estimated migration arise from retrospective adjustments to population estimates (which are made after each Census) to compensate for any intercensal discrepancy. A description of intercensal discrepancy is contained in the ABS information paper Demographic Estimates: Concepts, Sources and Methods (Cat. no. 3228.0).

Source: Australian Demographic Statistics (Cat. no. 3101.0)

2

LABOUR, NSW AND AUSTRALIA

Indicator	Unit	Latest period	New South Wales		Australia			
			Latest figure	Change from prior period %	Change from same period prior year %	Latest figure	Change from prior period %	Change from same period prior year %
Employed persons (seasonally adjusted)	'000	Oct 98	2 899.7	0.2	4.0	8 687.7	0.4	2.7
Unemployed persons (seasonally adjusted)	'000	Oct 98	208.7	-9.0	-14.5	719.8	-5.4	-6.9
Labour force (seasonally adjusted)	'000	Oct 98	3 108.4	-0.4	2.5	9 407.5	-0.1	1.9
Participation rate (seasonally adjusted)	%	Oct 98	62.0	-0.5	1.3	63.4	-0.3	0.5
Unemployment rate (seasonally adjusted)	%	Oct 98	6.7	-8.2	-17.3	7.7	-4.9	-8.3
Industrial disputes—working days lost	'000	Aug 98	20.0	127.3	-9.5	54.9	167.8	68.9
Job vacancies	'000	Aug 98	26.4	28.8	36.7	73.0	-0.3	5.4
Average weekly employee earnings—full-time adult ordinary time earnings (seasonally adjusted)	\$	Aug 98	760.9	1.8	4.0	738.4	1.8	4.2

Source: *Labour Force, Australia, Preliminary (Cat. no. 6202.0)*, *Job Vacancies and Overtime, Australia (Cat. no. 6354.0)*, *Industrial Disputes, Australia (Cat. no. 6321.0)*, *Average Weekly Earnings, States and Australia (Cat. no. 6302.0)*

3

LABOUR, NSW

Period	Seasonally adjusted						
	Employed persons '000	Unemployed persons '000	Labour force '000	Participation rate %	Unemployment rate %	Industrial disputes (working days lost) '000	Job vacancies '000
1997							
August	2 774.4	242.2	3 016.6	61.0	8.0	22.1	19.3
September	2 815.2	240.2	3 055.5	61.7	7.9	23.0	..
October	2 787.7	244.1	3 031.7	61.2	8.1	28.0	..
November	2 831.9	238.7	3 070.6	61.9	7.8	8.1	22.8
December	2 836.6	228.0	3 064.7	61.7	7.4	4.8	..
1998							
January	2 843.3	227.1	3 070.4	61.8	7.4	3.3	..
February	2 805.4	234.5	3 039.9	61.1	7.7	9.3	23.5
March	2 830.3	230.7	3 061.0	61.5	7.5	19.7	..
April	2 850.4	220.5	3 070.9	61.6	7.2	8.1	..
May	2 835.4	231.9	3 067.3	61.5	7.6	28.1	20.5
June	2 864.6	234.3	3 098.9	62.1	7.6	32.1	..
July	2 886.7	232.9	3 119.6	62.4	7.5	8.8	..
August	2 839.2	235.1	3 074.3	61.5	7.6	20.0	26.4
September	2 892.6	229.4	3 122.0	62.3	7.3	n.y.a.	..
October	2 899.7	208.7	3 108.4	62.0	6.7	n.y.a.	..

Source: *Labour Force, Australia, Preliminary (Cat. no. 6202.0)*, *Industrial Disputes, Australia (Cat. no. 6321.0)*

4

LABOUR FORCE STATUS, NSW—ORIGINAL

Month	Employed		Unemployed		Labour force	Not in labour force	Civilian population aged 15 years and over	Unemployment rate(a)	Participation rate(b)
	Full-time workers	Total	Looking for full-time work	Total					
	'000	'000	'000	'000	'000	'000	'000	%	%
MALES									
October									
1994	1 366.2	1 539.8	130.9	143.7	1 683.5	653.6	2 337.1	8.5	72.0
1995	1 405.6	1 580.3	119.5	134.5	1 714.8	651.4	2 366.2	7.8	72.5
1996	1 422.4	1 604.1	116.4	134.9	1 738.9	662.9	2 401.8	7.8	72.4
1997									
August	1 390.3	1 567.6	120.3	135.2	1 702.8	723.7	2 426.5	7.9	70.2
September	1 434.3	1 613.3	126.1	147.6	1 760.9	668.5	2 429.3	8.4	72.5
October	1 428.1	1 595.3	121.3	138.9	1 734.2	698.1	2 432.3	8.0	71.3
November	1 431.3	1 615.2	119.0	138.1	1 753.3	681.9	2 435.2	7.9	72.0
December	1 456.8	1 637.6	116.8	135.1	1 772.7	665.4	2 438.1	7.6	72.7
1998									
January	1 441.8	1 616.3	127.1	141.7	1 758.0	682.3	2 440.3	8.1	72.0
February	1 431.8	1 599.2	129.3	150.7	1 749.9	692.5	2 442.4	8.6	71.6
March	1 432.2	1 613.1	123.5	140.6	1 753.7	690.9	2 444.6	8.0	71.7
April	1 441.4	1 622.7	104.7	122.9	1 745.6	701.8	2 447.3	7.0	71.3
May	1 434.0	1 614.6	115.7	133.2	1 747.8	702.3	2 450.1	7.6	71.3
June	1 443.0	1 623.9	117.7	134.6	1 758.5	694.4	2 452.9	7.7	71.7
July	1 463.8	1 639.4	115.6	128.2	1 767.6	687.9	2 455.5	7.3	72.0
August	1 422.9	1 597.4	116.8	136.1	1 733.5	724.5	2 458.1	7.9	70.5
September	1 464.5	1 646.5	118.1	135.3	1 781.8	678.8	2 460.6	7.6	72.4
October	1 459.3	1 647.0	97.6	111.3	1 758.3	706.0	2 464.4	6.3	71.3
FEMALES									
October									
1994	704.4	1 141.0	69.1	103.0	1 243.9	1 178.4	2 422.3	8.3	51.4
1995	732.4	1 212.6	58.9	87.5	1 300.1	1 149.3	2 449.4	6.7	53.1
1996	736.5	1 215.1	63.2	98.1	1 313.3	1 176.2	2 489.4	7.5	52.8
1997									
August	703.9	1 182.9	65.3	92.7	1 275.6	1 240.8	2 516.5	7.3	50.7
September	722.2	1 226.8	63.4	96.1	1 322.9	1 196.5	2 519.4	7.3	52.5
October	721.0	1 194.1	68.1	97.3	1 291.5	1 230.6	2 522.1	7.5	51.2
November	725.5	1 228.3	62.1	87.8	1 316.1	1 208.6	2 524.7	6.7	52.1
December	730.8	1 234.9	66.3	95.7	1 330.6	1 196.8	2 527.4	7.2	52.6
1998									
January	721.4	1 185.5	71.4	102.6	1 288.1	1 241.2	2 529.3	8.0	50.9
February	707.1	1 189.9	72.1	111.7	1 301.7	1 229.5	2 531.1	8.6	51.4
March	715.8	1 217.8	73.7	105.3	1 323.1	1 209.9	2 533.0	8.0	52.2
April	720.0	1 226.2	63.2	96.2	1 322.4	1 212.9	2 535.3	7.3	52.2
May	707.9	1 220.7	68.5	94.0	1 314.7	1 222.9	2 537.7	7.1	51.8
June	727.3	1 242.0	57.2	88.3	1 330.4	1 209.6	2 540.0	6.6	52.4
July	762.9	1 255.2	59.9	88.7	1 344.0	1 198.3	2 542.3	6.6	52.9
August	721.7	1 216.6	62.7	85.2	1 301.9	1 242.7	2 544.5	6.5	51.2
September	753.6	1 271.8	62.0	97.4	1 369.2	1 177.6	2 546.8	7.1	53.8
October	747.7	1 254.4	55.5	91.0	1 345.4	1 204.8	2 550.1	6.8	52.8

For footnotes see end of table.

4

LABOUR FORCE STATUS, NSW—ORIGINAL *continued*

Month	Employed		Unemployed		Labour force	Not in labour force	Civilian population aged 15 years and over	Unemployment rate(a)	Participation rate(b)
	Full-time workers	Total	Looking for full-time work	Total					
	'000	'000	'000	'000	'000	'000	'000	%	%
PERSONS									
October									
1994	2 070.6	2 680.8	200.0	246.7	2 927.5	1 831.9	4 759.4	8.4	61.5
1995	2 137.9	2 792.9	178.4	222.0	3 014.9	1 800.7	4 815.6	7.4	62.6
1996	2 158.9	2 819.2	179.6	233.0	3 052.2	1 839.1	4 891.3	7.6	62.4
1997									
August	2 094.3	2 750.5	185.6	228.0	2 978.4	1 964.5	4 942.9	7.7	60.3
September	2 156.5	2 840.0	189.5	243.7	3 083.8	1 865.0	4 948.7	7.9	62.3
October	2 149.1	2 789.4	189.3	236.2	3 025.7	1 928.7	4 954.3	7.8	61.1
November	2 156.7	2 843.5	181.1	225.9	3 069.4	1 890.5	4 959.9	7.4	61.9
December	2 187.6	2 872.6	183.1	230.8	3 103.3	1 862.2	4 965.6	7.4	62.5
1998									
January	2 163.2	2 801.8	198.5	244.3	3 046.1	1 923.5	4 969.5	8.0	61.3
February	2 138.9	2 789.1	201.4	262.4	3 051.5	1 922.0	4 973.5	8.6	61.4
March	2 148.0	2 830.9	197.1	245.8	3 076.8	1 900.8	4 977.5	8.0	61.8
April	2 161.5	2 848.9	167.9	219.1	3 068.0	1 914.7	4 982.7	7.1	61.6
May	2 141.9	2 835.3	184.2	227.2	3 062.5	1 925.2	4 987.8	7.4	61.4
June	2 170.3	2 865.9	174.9	223.0	3 088.8	1 904.1	4 992.9	7.2	61.9
July	2 226.8	2 894.6	175.5	216.9	3 111.6	1 886.2	4 997.7	7.0	63.3
August	2 144.7	2 814.1	179.5	221.3	3 035.4	1 967.2	5 002.6	7.3	60.7
September	2 218.1	2 918.3	180.3	232.7	3 151.0	1 856.4	5 007.4	7.4	62.9
October	2 207.0	2 901.4	153.1	202.2	3 103.7	1 910.8	5 014.5	6.5	61.9

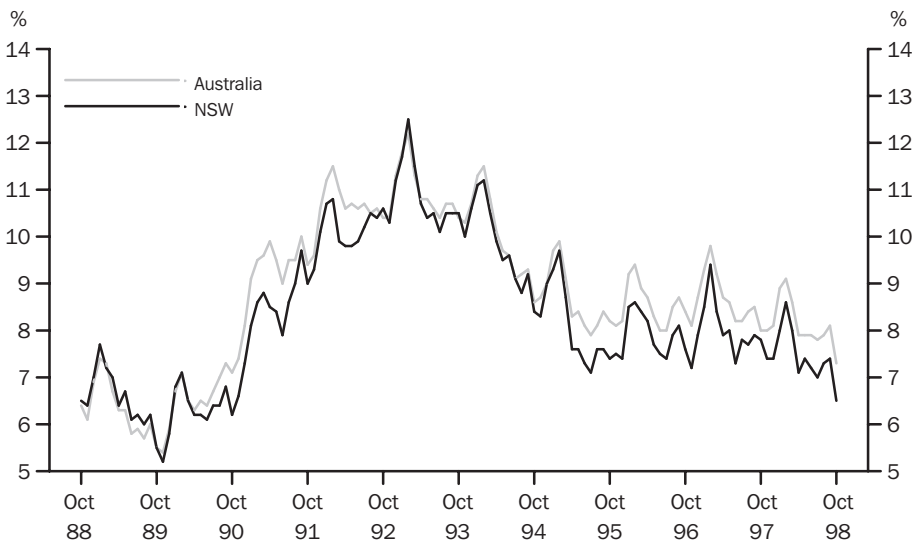
^a The number of unemployed in each group expressed as a percentage of the labour force in the same group.

^b The labour force in each group expressed as a percentage of the civilian population aged 15 and over in the same group.

Source: Labour Force, Australia, Preliminary (Cat. no. 6202.0)

5

UNEMPLOYMENT RATE—ORIGINAL



Source: Labour Force, Australia, Preliminary (Cat. no. 6202.0).

6

COAL, ELECTRICITY AND GAS PRODUCTION, NSW AND AUSTRALIA—ORIGINAL

Indicator	Unit	Latest period	New South Wales				Australia		
			Latest figure	Change from prior period		Latest figure	Change from prior period		
				%	Change from same period prior year		%	Change from same period prior year	
Raw coal won—									
Underground	'000 tonnes	Aug 98	3 806	-29.4	-25.7	5 088	-25.7	-20.6	
Open cut	'000 tonnes	Aug 98	5 595	-24.5	-8.5	13 728	-14.3	-3.0	
Total	'000 tonnes	Aug 98	9 401	-26.6	-16.3	18 816	-17.7	-8.5	
Electricity	mill. kWh	Sep qtr 98	16 543	6.3	-0.5	46 084	4.1	1.2	
Gas(a)	teraJ	Sep qtr 98	32 258	8.9	-5.4	190 830	9.4	4.1	

^a Available for issue through mains. Includes ACT.

Source: Joint Coal Board, Manufacturing Production, Australia (Cat. no. 8301.0)

7

COAL, ELECTRICITY AND GAS PRODUCTION, NSW—ORIGINAL

Period	Raw coal won			Electricity mill. kWh	Gas(a) teraJ
	Underground	Open cut	Total		
	'000 tonnes	'000 tonnes	'000 tonnes		
1995-96	54 314	58 775	113 089	62 047	104 141
1996-97	54 643	69 037	123 680	62 788	109 284
1997-98	58 249	75 049	133 298	61 804	111 665
1997					
June	4 717	5 785	10 502	n.a.	n.a.
July	6 491	7 085	13 576	} 16 632	} 34 086
August	5 124	6 112	11 236		
September	r4 910	5 792	r10 702		
October	4 498	6 716	r11 215	} 15 220	} 25 445
November	r4 253	r6 083	10 336		
December	4 090	5 997	10 087		
1998					
January r	5 292	6 463	11 755	} 14 390	} 22 521
February	r4 553	r5 948	r10 501		
March r	4 437	5 800	10 237		
April r	5 160	7 052	12 212	} 15 561	} 29 614
May	4 648	5 851	10 499		
June	4 842	6 811	11 653		
July	r5 392	7 408	r12 800	} 16 543	} 32 258
August	3 806	5 595	9 401		
September	n.y.a.	n.y.a.	n.y.a.		

^a Available for issue through mains. Includes ACT.

Source: Joint Coal Board, Manufacturing Production, Australia (Cat. no. 8301.0)

8

BUILDING APPROVALS, NSW AND AUSTRALIA

Indicator	Unit	Latest period	Latest figure	New South Wales		Australia		
				Change from prior period %	Change from same period prior year %	Latest figure	Change from prior period %	Change from same period prior year %
Number of dwelling units(a) (seasonally adjusted)—								
New houses	No.	Sep 98	2 014	-0.1	-7.9	8 301	-0.8	-0.8
Total	No.	Sep 98	3 800	0.6	-4.1	12 019	1.9	-1.0
Value of new residential building (seasonally adjusted)	\$m	Sep 98	408.5	-12.2	-5.1	1 286.0	-3.1	2.8
Value of alterations and additions to residential building(b) (seasonally adjusted)	\$m	Sep 98	96.5	5.7	2.9	225.6	-4.4	-2.5
Value of non-residential building(c) (original)	\$m	Sep 98	311.5	-49.1	-21.4	932.2	-35.9	-10.5
Value of all building (original)	\$m	Sep 98	847.3	-26.8	-11.6	2 584.5	-15.3	-2.6

^a Includes dwelling units approved as part of the construction of non-residential building and alterations and additions to existing buildings (including conversions to dwelling units).

^b Valued at \$10,000 or more. Includes conversions of existing buildings into residential buildings.

^c Valued at \$50,000 or more.

Source: Building Approvals, Australia (Cat. no. 8731.0)

9

BUILDING APPROVALS, NSW

Period	Number of dwelling units(a), seasonally adjusted				Value of building approvals			
	New houses		Total		Seasonally adjusted		Original	
	Private sector	Total	Private sector	Total	New residential building	Alterations and additions to residential building(b)	Non-residential building(c)	All building
	no.	no.	no.	no.	\$m	\$m	\$m	\$m
1995-96	3 650.3	9 168.6
1996-97	5 169.2	11 356.6
1997-98	5 894.7	13 287.2
1997								
July	2 122	2 134	3 621	3 700	427.2	95.3	584.9	1 156.7
August	2 198	2 203	4 622	4 742	614.2	99.5	710.5	1 405.9
September	2 181	2 186	3 844	3 961	430.3	93.8	396.4	958.0
October	2 424	2 434	4 045	4 077	479.4	108.9	520.3	1 123.1
November	2 399	2 411	4 424	4 470	503.1	103.5	380.6	1 028.0
December	2 545	2 563	4 476	4 620	529.0	119.0	286.0	885.8
1998								
January	2 621	2 648	4 395	4 506	450.2	144.0	477.0	984.0
February	2 451	2 482	3 635	3 767	413.4	122.5	461.8	943.8
March	2 574	2 592	4 496	4 633	522.9	112.7	386.4	988.9
April	2 578	2 585	4 909	5 025	577.0	160.4	527.0	1 263.2
May	2 405	2 419	4 050	4 127	463.7	129.4	640.7	1 335.0
June	2 483	2 529	5 256	5 357	588.9	139.1	523.1	1 214.8
July	2 289	2 450	4 594	4 920	564.1	142.5	329.9	1 103.2
August	r2000	r2 016	r3 672	r3 776	r4 65.5	91.3	r612.0	r1 158.0
September	1 991	2 014	3 716	3 800	408.5	96.5	311.5	847.3

^a Includes dwelling units approved as part of the construction of non-residential building and alterations and additions to existing buildings (including conversions to dwelling units).

^b Valued at \$10,000 or more. Includes conversions of existing buildings into residential buildings.

^c Valued at \$50,000 or more.

Source: Building Approvals, Australia (Cat. no. 8731.0)

10

TURNOVER OF RETAIL ESTABLISHMENTS(a), NSW AND AUSTRALIA—SEASONALLY ADJUSTED

Indicator	Latest period	New South Wales			Australia		
		Latest figure	Change from prior period	Change from same period prior year	Latest figure	Change from prior period	Change from same period prior year
		\$m	%	%	\$m	%	%
Food retailing	Sep 98	1 530.0	3.2	0.0	4 748.8	1.8	6.0
Department stores	Sep 98	355.6	2.0	1.8	1 040.0	3.5	0.6
Clothing and soft good retailing	Sep 98	296.4	3.5	7.0	790.6	-1.7	10.7
Household good retailing	Sep 98	416.2	-2.2	-3.9	1 257.9	0.3	-2.1
Recreational good retailing	Sep 98	221.5	7.9	-1.9	669.5	2.5	2.8
Other retailing	Sep 98	405.1	2.0	7.0	1 152.9	-0.6	3.9
Hospitality and services	Sep 98	794.3	1.1	4.2	1 973.7	-1.6	6.5
Total value of retail sales	Sep 98	4 019.1	2.2	1.6	11 633.5	0.8	4.5

^a The figures shown are derived from a monthly survey of retail establishments. Excludes motor vehicle, boat and caravan dealers, service stations, smash repairers, tyre and battery retailers, bread and milk vendors, footwear repairers and electrical appliance repairers n.e.c. Retail establishments which do not have employees are excluded from the survey. Turnover includes retail sales, wholesale sales, takings from repairs, meals and hiring of goods; and commissions from agency activity (e.g. commissions received from collecting dry cleaning, selling lottery tickets etc.)

Source: Retail Trade, Australia (Cat. no. 8501.0).

11

TURNOVER OF RETAIL ESTABLISHMENTS(a), NSW—SEASONALLY ADJUSTED

Period	Food retailing	Department stores	Clothing and soft good retailing	Household good retailing	Recreational good retailing	Other retailing	Hospitality and services	Total
	\$m	\$m	\$m	\$m	\$m	\$m	\$m	\$m
1997								
July	1 509.1	346.9	276.7	440.0	216.4	389.4	751.0	3 929.4
August	1 506.3	335.5	275.1	436.6	213.5	386.7	755.6	3 909.4
September	1 529.3	349.3	276.9	433.1	225.9	378.7	762.3	3 955.5
October	1 524.9	343.4	274.7	421.2	223.0	394.1	762.4	3 943.6
November	1 524.4	349.4	279.0	402.3	220.3	410.8	766.8	3 952.9
December	1 546.0	331.9	282.0	420.7	226.6	406.8	772.2	3 986.2
1998								
January	1 560.2	367.4	267.4	438.8	234.4	398.3	760.3	4 026.8
February	1 558.1	328.7	266.5	437.4	224.7	407.0	754.4	3 976.9
March	1 547.6	334.2	265.2	444.7	224.0	394.2	760.3	3 970.3
April	1 515.9	354.9	269.6	434.1	229.8	405.0	762.3	3 971.5
May	1 510.2	362.3	286.9	426.9	221.5	407.7	775.4	3 991.0
June	1 532.2	312.4	271.8	422.6	224.5	412.4	775.2	3 951.0
July	1 514.5	395.7	281.4	426.9	219.5	406.0	801.9	4 046.0
August	1 483.1	348.5	286.4	425.6	205.2	397.3	785.4	3 931.4
September	1 530.0	355.6	296.4	416.2	221.5	405.1	794.3	4 019.1

^a The figures shown are derived from a monthly survey of retail establishments. Excludes motor vehicle, boat and caravan dealers, service stations, smash repairers, tyre and battery retailers, bread and milk vendors, footwear repairers and electrical appliance repairers n.e.c. Retail establishments which do not have employees are excluded from the survey. Turnover includes retail sales, wholesale sales, takings from repairs, meals and hiring of goods; and commissions from agency activity (e.g. commissions received from collecting dry cleaning, selling lottery tickets etc.)

Source: Retail Trade, Australia (Cat. no. 8501.0).

12

NEW MOTOR VEHICLE REGISTRATIONS(a), NSW AND AUSTRALIA—SEASONALLY ADJUSTED

Indicator	Latest period	New South Wales			Australia		
		Latest figure	Change from prior period	Change from same period prior year	Latest figure	Change from prior period	Change from same period prior year
		no.	%	%	no.	%	%
Passenger vehicles	Sep 98	20 383	11.7	10.5	56 106	2.8	4.9
Other vehicles (excluding motor cycles)	Sep 98	3 213	-2.0	18.5	10 412	1.7	12.8
Total registrations (excluding motor cycles)	Sep 98	23 597	9.6	11.5	66 519	2.6	6.1

^a Includes vehicles (other than those of the defence forces) owned by Government departments and authorities. Excludes mobile plant and equipment, tractors, trailers and non-motorised caravans.

Source: *New Motor Vehicle Registrations, Australia, Preliminary (Cat. no. 9301.0)*.

13

NEW MOTOR VEHICLE REGISTRATIONS(a), NSW—SEASONALLY ADJUSTED

Period	Passenger vehicles	Other vehicles (excluding motor cycles)	Total (excluding motor cycles)
	no.	no.	no.
1997			
July	17 377	2 763	20 141
August	16 977	2 732	19 709
September	18 454	2 711	21 165
October	18 920	2 729	21 650
November	18 995	2 513	21 507
December	18 315	3 020	21 335
1998			
January	19 116	2 967	22 083
February	18 501	3 259	21 760
March	17 747	2 978	20 725
April	19 342	3 450	22 791
May	18 640	3 282	21 923
June	20 817	3 203	24 020
July	22 040	3 351	25 391
August	18 250	3 277	21 528
September	20 383	3 213	23 597

^a Includes vehicles (other than those of the defence forces) owned by Government departments and authorities. Excludes mobile plant and equipment, tractors, trailers and non-motorised caravans.

Source: *New Motor Vehicle Registrations, Australia, Preliminary (Cat. no. 9301.0)*.

14

ACCOMMODATION ESTABLISHMENTS(a) NSW AND AUSTRALIA—ORIGINAL

Indicator	Unit	Latest period	New South Wales				Australia		
			Latest figure	Change from	Change from	Latest figure	Change from	Change from	
				prior period	same period		prior period	same period	
			%	%		%	%		
Room nights	'000	June qtr 98	2 890.3	-4.2	2.8	8 724.6	-3.7	3.2	
Room occupancy rate	%	June qtr 98	56.3	-5.9	-2.1	54.6	-5.9	-2.0	
Takings	\$'000	June qtr 98	316 721	-7.7	4.4	881 085	-7.8	3.1	

^a Licensed hotels with facilities, motels and guest houses and serviced apartments with 15 or more rooms or units.

Source: *Tourist Accommodation, Australia (Cat. no. 8635.0)*

15

ACCOMMODATION ESTABLISHMENTS(a) SYDNEY AND NSW—ORIGINAL

Period	Sydney Tourism Region(b)			New South Wales		
	Room nights	Room occupancy rate	Takings	Room nights	Room occupancy rate	Takings
	'000	%	\$'000	'000	%	\$'000
1997						
March qtr	1 680.2	79.1	230 849	3 030.9	62.8	334 524
June qtr	1 515.1	70.5	209 163	2 810.3	57.5	303 313
September qtr	1 555.0	69.6	209 484	2 964.9	59.0	322 065
December qtr	1 653.5	73.0	235 244	3 081.0	60.8	343 650
1998						
March qtr	1 664.9	71.9	235 516	3 017.3	59.8	343 248
June qtr	1 568.3	66.3	216 500	2 890.3	56.3	316 721

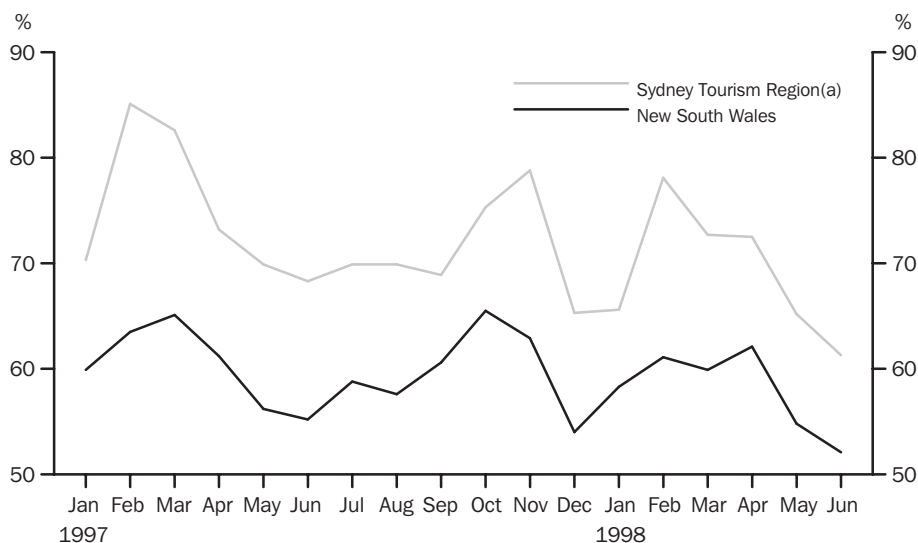
^a Licensed hotels with facilities, motels and guest houses and serviced apartments with 15 or more rooms or units.

^b Excludes Gosford, Wyong and Blue Mountains Statistical Local Areas.

Source: *Tourist Accommodation, Small Area Data, NSW (Prod. no. 8635.1.40.001)*

16

ACCOMMODATION ESTABLISHMENTS MONTHLY ROOM OCCUPANCY RATE—ORIGINAL



(a) Excludes Gosford, Wyong and Blue Mountains Statistical Local Areas.

Source: *Tourist Accommodation, Small Area Data, NSW (Prod. no. 8635.1.40.001)*

17

CONSUMER AND PRODUCER PRICE INDEXES, NSW AND AUSTRALIA

Indicator	Unit	Latest period	Latest figure	New South Wales		Australia(a)		
				Change from prior period %	Change from same period prior year %	Latest figure	Change from prior period %	Change from same period prior year %
Consumer Price Index (all groups)	1989-90 =100.0	Sep qtr 98	121.9	0.4	1.8	121.3	0.2	1.3
Price index of materials used in house building (all groups)	1989-90 =100.0	Sep qtr 98	120.8	0.1	2.5	119.4	0.3	1.8
Price index of materials used in building other than house building (all groups)	1989-90 =100.0	Sep qtr 98	115.0	0.2	0.7	114.8	0.3	0.7

^a For the Consumer Price Index this is the weighted average of eight capital cities and for the other two indexes, the weighted average of the six State capital cities.

Source: Consumer Price Index (Cat. no. 6401.0), Price Index of Materials Used in Building Other Than House Building, Six State Capital Cities (Cat. no. 6407.0), Price Index of Materials Used in House Building, Six State Capital Cities (Cat. no. 6408.0)

18

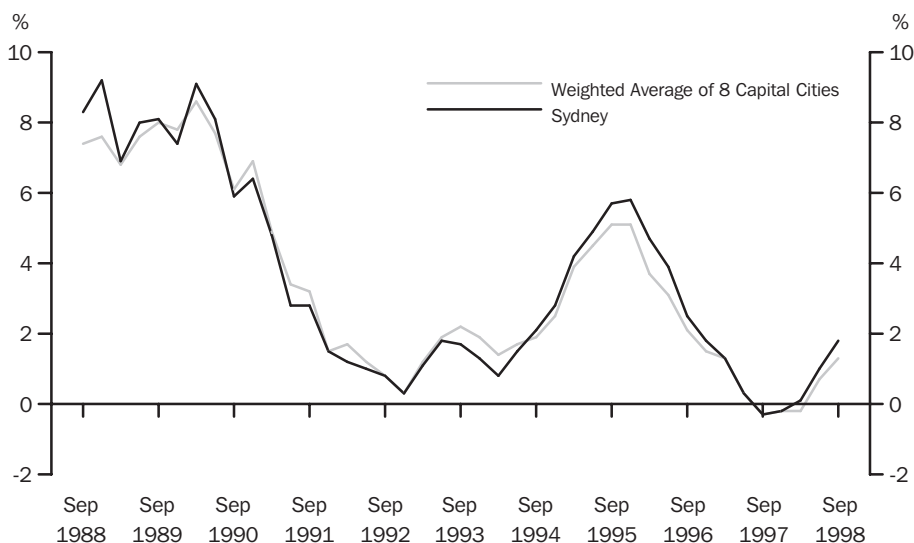
CONSUMER AND PRODUCER PRICE INDEXES, NSW

Period	Consumer Price Index, all groups	Price Index of materials used in house building, all groups	Price Index of materials used in building other than house building, all groups
	1989-90 = 100.0	1989-90 = 100.0	1989-90 = 100.0
1997			
June qtr	120.2	117.3	113.9
September qtr	119.8	117.8	114.2
December qtr	120.1	119.4	114.2
1998			
March qtr	120.7	120.8	114.4
June qtr	121.4	120.7	114.8
September qtr	121.9	120.8	115.0

Source: Consumer Price Index (Cat. no. 6401.0), Price Index of Materials Used in Building Other Than House Building, Six State Capital Cities (Cat. no. 6407.0), Price Index of Materials Used in House Building, Six State Capital Cities (Cat. no. 6408.0).

19

CONSUMER PRICE INDEX, ANNUAL RATE OF CHANGE



Source: Consumer Price Index (Cat. no. 6401.0)

Indicator	Latest period	New South Wales			Australia		
		Latest figure	Change from prior period	Change from same period prior year	Latest figure	Change from prior period	Change from same period prior year
Lending commitments for the construction or purchase of dwellings—							
Construction of dwellings	Sept 98	242	8.0	2.6	753	8.2	2.2
Purchase of newly erected dwellings	Sept 98	106	13.7	-8.4	238	0.7	-7.6
Purchase of established dwellings(a)	Sept 98	1 162	-0.7	-4.0	2 790	1.0	-0.7
Refinancing of existing dwellings	Sept 98	328	6.6	1.6	765	1.7	-9.7
Lending commitments for alterations and additions	Sept 98	87	2.2	-15.7	205	2.5	-14.3
Total lending commitments to individuals for housing(b)	Sept 98	1 838	2.4	-2.5	4 547	2.2	-2.3
Total lending commitments to individuals for housing (seasonally adjusted)(b)	Sept 98	1 759	-3.6	-5.2	4 345	-3.9	-5.0

^a Excludes refinancing.

^b Excludes alterations and additions.

Source: *Housing Finance for Owner Occupation, Australia (Cat. no. 5609.0)*

Period	Lending commitments for the construction or purchase of dwellings				Lending commitments for alterations and additions	Total lending commitments to individuals for housing(b)	
	Construction of dwellings	Purchase of newly erected dwellings	Purchase of established dwellings(a)	Refinancing of existing dwellings		Original	Seasonally adjusted
1995-96	1 895	898	10 145	2 930	1 262	15 868	..
1996-97	2 117	1 234	12 566	4 062	1 221	19 979	..
1997-98	2 625	1 280	14 445	3 573	1 174	21 973	..
1997							
July	221	117	1 219	322	93	1 878	1 708
August	214	115	1 155	311	90	1 794	1 824
September	236	116	1 210	322	103	1 885	1 856
October	224	111	1 253	302	110	1 891	1 884
November	201	110	1 198	262	98	1 771	1 805
December	204	112	1 137	247	91	1 700	1 789
1998							
January	169	73	919	238	81	1 398	1 928
February	216	98	1 137	298	105	1 750	1 790
March	239	112	1 290	314	107	1 955	1 728
April	223	107	1 305	285	95	1 920	1 919
May	216	95	1 261	312	99	1 885	1 775
June	262	116	1 360	359	102	2 097	2 023
July	263	123	1 284	376	97	2 045	1 838
August	224	93	1 171	307	85	1 796	1 825
September	242	106	1 162	328	87	1 838	1 759

^a Excludes refinancing.

^b Excludes alterations and additions.

Source: *Housing Finance for Owner Occupation, Australia (Cat. no. 5609.0)*

	<i>Actual</i>	<i>Estimates</i>
	<i>3 months ended 30 September 1998</i>	<i>12 months ended 30 June 1999</i>
	<i>\$m</i>	<i>\$m</i>
Current receipts—		
Stamp duties	965	3 459
Payroll tax	869	3 621
Land tax	74	945
Motor vehicle taxes	272	1 002
Gaming and betting	328	1 440
Commonwealth safety net taxes	467	1 873
Other taxes	266	1 095
Commonwealth general purpose grants	1 205	4 731
Commonwealth specific purpose grants	808	3 230
Dividends/tax equivalents	425	1 251
Other current receipts	261	1 202
<i>Total current receipts</i>	<i>5 940</i>	<i>23 849</i>
Current payments—		
Interest payments	265	1 276
Superannuation	360	1 462
Subsidies to non-budget sector—		
Redundancies	18	77
Services	250	798
Departmental payments—		
Redundancies	23	53
Health	1 394	5 706
Education	1 368	5 364
Law and order	441	1 733
Community services	302	1 217
Other	1 398	5 693
Treasurer's advances	..	125
Less user charges	-586	-2 014
<i>Total current outlays</i>	<i>5 233</i>	<i>21 490</i>
Current result surplus/deficit(-)	707	2 359
Capital receipts—		
Commonwealth specific purpose grants	243	788
Other capital receipts	1	10
<i>Total capital receipts</i>	<i>244</i>	<i>798</i>
Capital outlays—		
Gross fixed capital payments	559	2 841
Capital grants	148	1 016
Less asset sales	-199	-745
<i>Total capital outlays</i>	<i>508</i>	<i>3 112</i>
Capital result surplus/deficit(-)	-264	-2 314
Government Finance Statistics result surplus/deficit(-)	443	45

^a Includes Department of Training and Education Co-ordination, Department of School Education, Office of the Board of Studies and TAFE.

^b Includes Attorney Generals Department, Department of Corrective Services and Police Services.

^c Expenditure from the Treasurer's Advance is included in the relevant current payments figures.

Note: Comparative figures for 1997-98 are not available due to changes in coverage of data from General Government Budget to all General Government by the New South Wales Treasury.

Source: Financial Statement released by NSW Treasury. Figures may differ from data published in annual ABS publications.

23

ACTUAL PRIVATE NEW FIXED CAPITAL EXPENDITURE, CURRENT PRICES—NSW AND AUSTRALIA, TREND

Indicator	Latest period	New South Wales			Australia		
		Latest figure	Change from prior period	Change from same period prior year	Latest figure	Change from prior period	Change from same period prior year
		\$m	%	%	\$m	%	%
Type of asset—							
New buildings and structures	June qtr	881	-9.2	-15.5	3332	2.6	-3.9
Equipment, plant and machinery	June qtr	2543	-2.9	7.4	8355	-0.6	8.7
Total	June qtr	3424	-4.6	0.4	11687	0.2	4.8

Source: State Estimates of Private New Capital Expenditure (Cat. no. 5646.0)

24

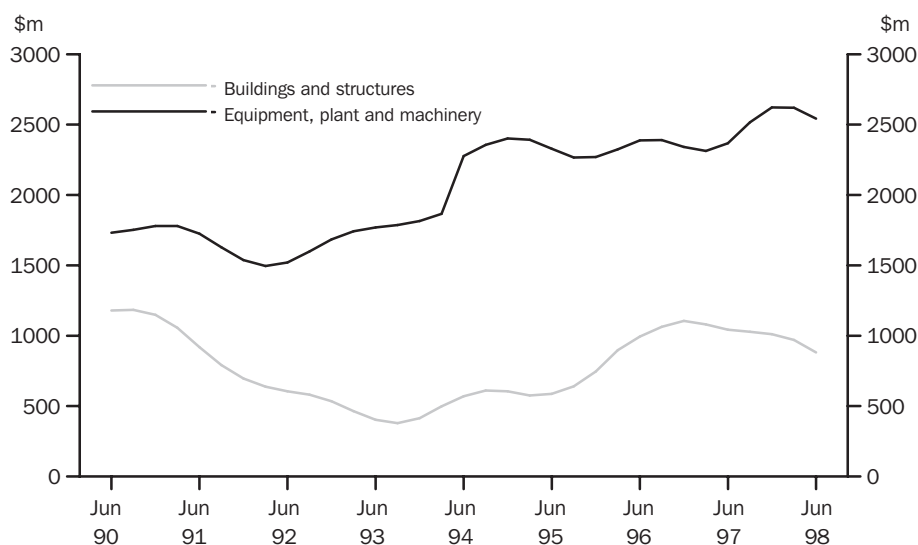
ACTUAL PRIVATE NEW FIXED CAPITAL EXPENDITURE, CURRENT PRICES—NSW, TREND

Period	Type of asset		
	New buildings and structures	Equipment, plant and machinery	Total
	\$m	\$m	\$m
1997			
March qtr r	1080	2313	3393
June qtr r	1043	2368	3412
September qtr r	1028	2517	3545
December qtr r	1011	2623	3634
1998			
March qtr r	970	2620	3590
June qtr	881	2543	3424

Source: State Estimates of New Capital Expenditure (Cat. no. 5646.0)

25

ACTUAL PRIVATE NEW FIXED CAPITAL EXPENDITURE, CURRENT PRICES—NSW, TREND



Source: State Estimates of New Capital Expenditure (5646.0)

Item	Latest period	New South Wales			Australia		
		Latest figure \$m	Change from prior period %	Change from same period prior year %	Latest figure \$m	Change from prior period %	Change from same period prior year %
Overseas imports into NSW	Sep 98	3 554	2.3	10.4	8 557	4.9	16.3
Total overseas exports(c)	Sep 98	1 619	1.3	-3.0	7 231	-1.6	5.8
Export commodities and SITC(d) code—							
Meat and meat preparations (01)	Sep 98	87	26.7	14.8	355	13.5	21.0
Cereals and cereal preparations (04)	Sep 98	121	38.8	-24.0	440	-10.6	9.6
Wool and other animal hair (268)	Sep 98	59	36.4	-42.7	225	29.4	-24.0
Coal, coke and briquettes (32)	Sep 98	325	-8.4	-7.2	889	5.5	10.2
Iron and steel (67)	Sep 98	95	2.9	61.0	141	4.4	19.1
Aluminium (684)	Sep 98	113	14.3	54.5	301	5.3	25.9
Office machines and automatic data processing machines (75)	Sep 98	32	3.2	-32.8	66	20.1	-20.6

^a Figures shown are Customs value.

^b Figures shown are Free On Board (FOB) values.

^c Excludes re-exported goods.

^d Standard International Trade Classification Revision 3.

Source: International Trade database

Period	Overseas exports of SITC(d) commodities								
	Overseas imports into NSW \$m	Total overseas exports(c) \$m	Meat and meat preparations (01) \$m	Cereals and cereal preparations (04) \$m	Wool and other animal hair (268) \$m	Coal, coke and briquettes (32) \$m	Iron and steel (67) \$m	Aluminium (684) \$m	Office machines and automatic data processing machines (75) \$m
1995-96	34 917	16 684	794	822	720	3 338	1 037	1 111	638
1996-97	34 229	17 730	784	1 540	859	3 426	968	993	535
1997-98	r38 485	r19 673	922	r1 552	1 061	4 048	1 168	1 226	522
1997									
July	3 224	1 760	74	146	104	335	65	97	45
August	3 005	1 760	71	186	79	318	93	116	44
September	3 220	1 669	76	159	102	351	59	73	48
October	3 388	1 694	78	95	120	302	123	98	45
November	3 098	1 761	89	149	130	328	98	102	51
December	3 422	1 839	88	165	116	384	89	99	59
1998									
January	2 945	1 436	65	135	72	359	115	118	37
February	2 804	1 459	75	115	82	322	87	82	38
March	3 439	1 502	82	119	73	301	99	107	38
April	r3 070	1 480	64	100	66	337	104	100	37
May	r3 275	r1 671	82	r97	67	346	118	109	38
June	r3 596	1 642	79	86	49	366	118	r126	42
July	3 769	1 607	79	96	65	342	112	104	41
August	r3 475	r1 599	r69	r87	r43	355	92	r99	31
September	3 554	1 619	87	121	59	325	95	113	32

^a Figures shown are Customs value.

^b Figures shown are Free On Board (FOB) values.

^c Excludes re-exported goods.

^d Standard International Trade Classification Revision 3.

Source: International Trade database

SELF-HELP ACCESS TO STATISTICS

PHONE Call 1900 986 400 for the latest statistics on CPI, Labour Force, Earnings, National Accounts, Balance of Payments and other topics. (Call cost is 75c per minute)

INTERNET <http://www.abs.gov.au>

LIBRARY A range of ABS publications is available from public and tertiary libraries Australia wide. Contact your nearest library to determine whether it has the ABS statistics you require.

WHY NOT SUBSCRIBE?

PHONE +61 1300 366 323

FAX +61 3 9615 7848

CONTACTING THE ABS

ABS provides a range of services, including: a telephone inquiry service; information consultancy tailored to your needs; survey, sample and questionnaire design; survey evaluation and methodological reviews; and statistical training.

<i>INQUIRIES</i>	<i>By phone</i>	<i>By fax</i>
Canberra	02 6252 6627	02 6253 1404
Sydney	02 9268 4611	02 9268 4668
Melbourne	03 9615 7755	03 9615 7798
Brisbane	07 3222 6351	07 3222 8283
Perth	08 9360 5140	08 9360 5955
Adelaide	08 8237 7400	08 8237 7566
Hobart	03 6222 5800	03 6222 5995
Darwin	08 8943 2111	08 8981 1218

POST Client Services, ABS, PO Box 10, Belconnen, ACT 2616

EMAIL client.services@abs.gov.au



2130710012982
ISSN 1031-8534

RRP \$16.00